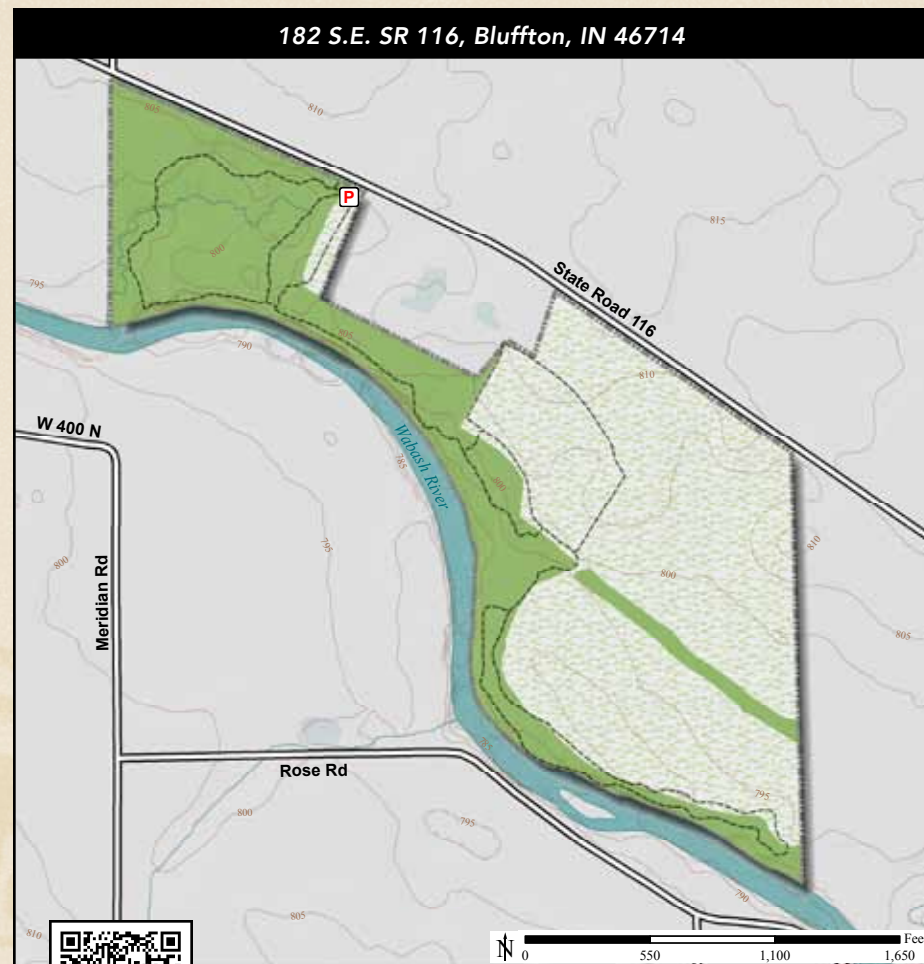





ACREAGE: 86.7 | YEAR ACQUIRED: 1973, 2000



 Here along the Wabash River are sycamore, hackberry, burr and red oak trees that have stood along the river since Native Americans roamed the land, and that early explorers passed as they paddled down the river. On the bluffs are sugar and black maple trees and red elms. In spring, there are warblers and other migrating birds in the trees. In summer, there are nesting birds such as the wood thrush and red-eyed vireo. Woodland wildflowers, including shooting star and wild hyacinth, decorate the woodland floor in season.



Swamp Sparrow Nest

**DIRECTIONS:**

From Bluffton take SR 1 (Main St.) north 1.0 miles to SR 116 (Dustman Rd.) and turn left (west). Travel through Murray, 4.6 miles to the preserve on the left.

