

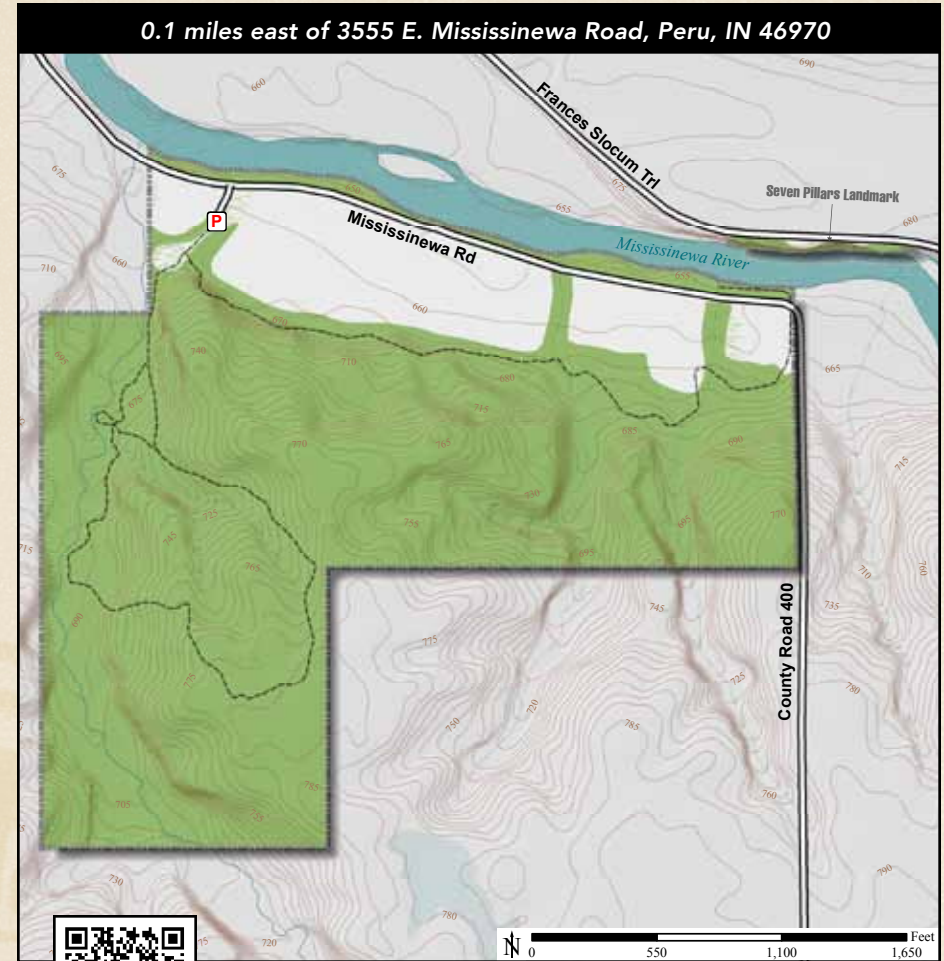


ACREAGE: 148.4 | YEAR ACQUIRED: 1982, 1992

This preserve on the south side of the Mississinewa River is named after the landmark 25-foot limestone pillars, also owned by ACRES, which are located on the north side of the river. On top of the bluff grow red cedar, Juneberry and shadbush. In the preserve are beech, maple and other trees, as well as open meadow. The Miami nation continues to gather at the pillars.



Nautilus Fossil



DIRECTIONS:

From Peru take Broadway south 0.3 miles to Riverside Dr./SR 124 and turn left (east). Travel 2.5 miles to Mississinewa Rd. (300 E) and turn right (south). Travel 1.3 miles to 200 S (Mississinewa Rd.) and turn left (east). Travel 0.75 miles to the preserve on the right. For a view of the Seven Pillars Landmark, continue east 0.5 miles to 400 E. Parking area is 0.1 miles east of 3555 E. Mississinewa Road, Peru, IN 46970.

