



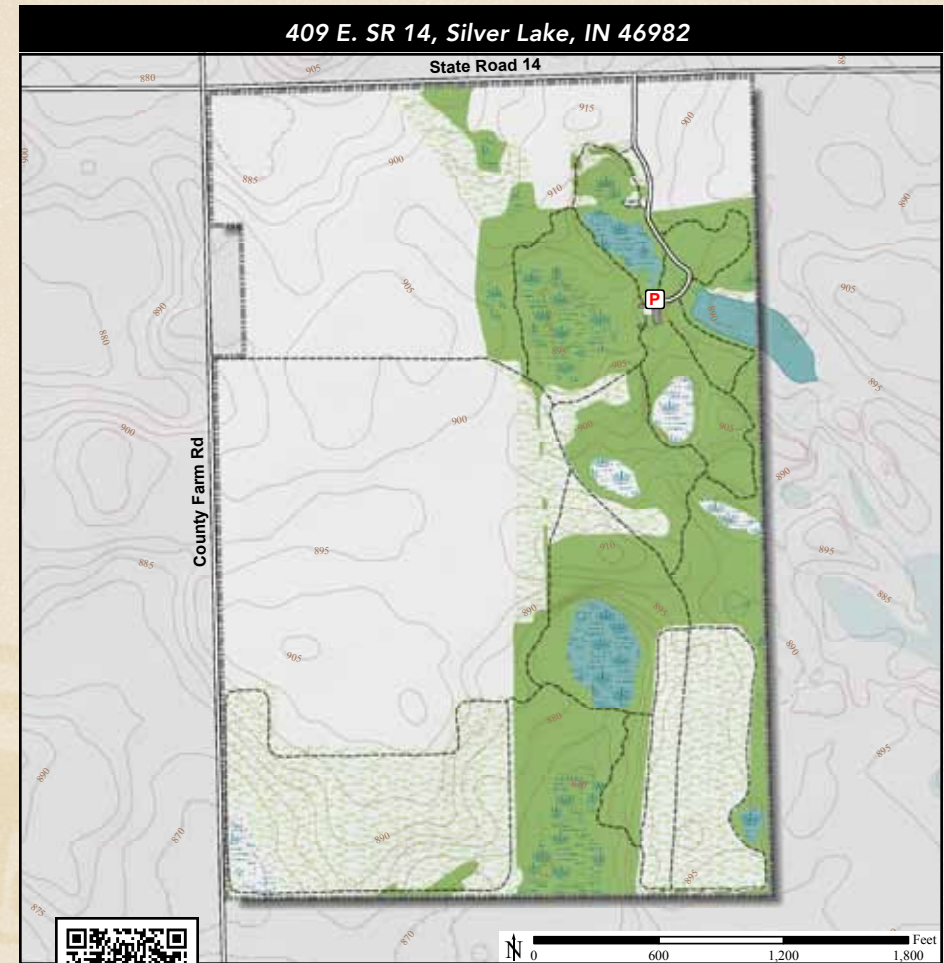
ACREAGE: 235.5 | YEAR ACQUIRED: 2002



This preserve has a small pond surrounded by forest, vernal pools scattered beneath the trees, a pine planting, numerous wetlands and a prairie. There are oak and hickory and many more species of trees as well as numerous species of wildflowers. And there are various birds, from wood ducks on the pond to several species of woodpeckers in the woods, including red-headed and pileated.



Salamander Larvae



DIRECTIONS:

From Silver Lake take SR 14 east 3.4 miles to the preserve on the right.

