

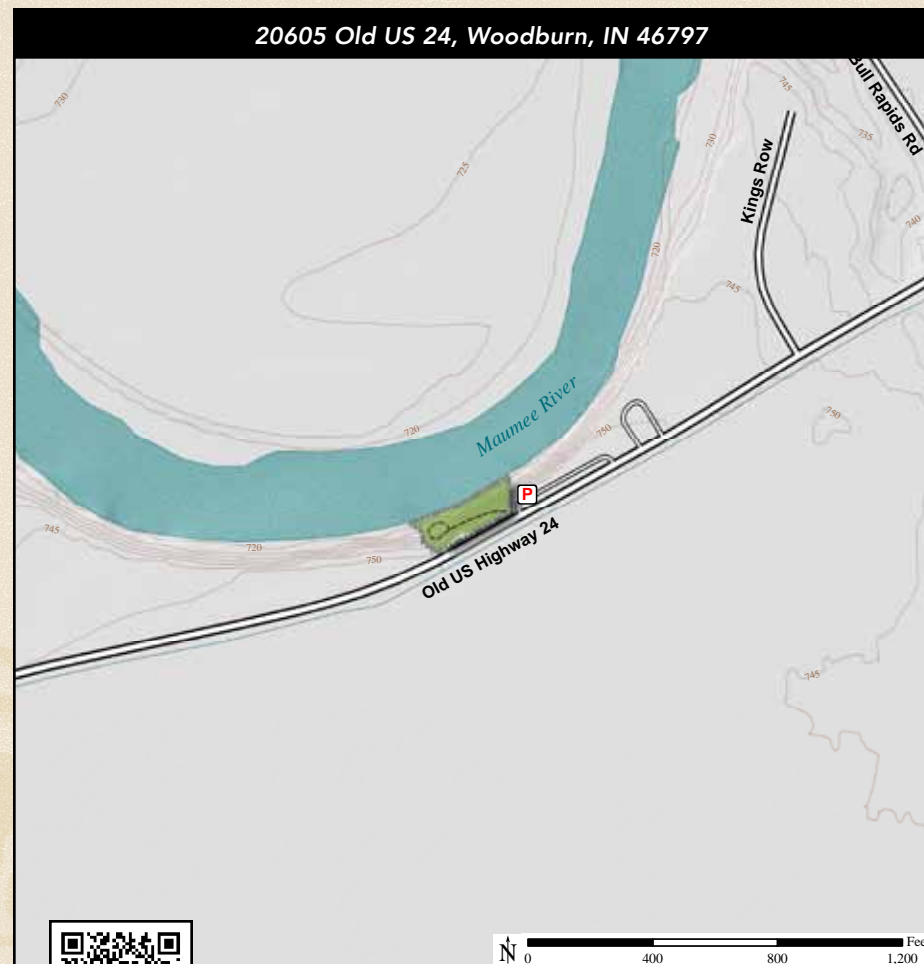


ACREAGE: 0.9 | YEAR ACQUIRED: 1976

*The Maumee River Overlook is a high forested embankment overlooking the Maumee River. A water-powered sawmill was once located nearby on an outcrop of rocks in the river. Lumber from the mill was used in the Wabash & Erie Canal, which ran along the south border of the preserve.*



Black Swallowtail Caterpillar



**DIRECTIONS:**

From Woodburn take Bull Rapids Rd. north 2.0 miles to old US 24 and turn left (west). Travel 0.3 miles to the preserve on the right, just past the cemetery.

