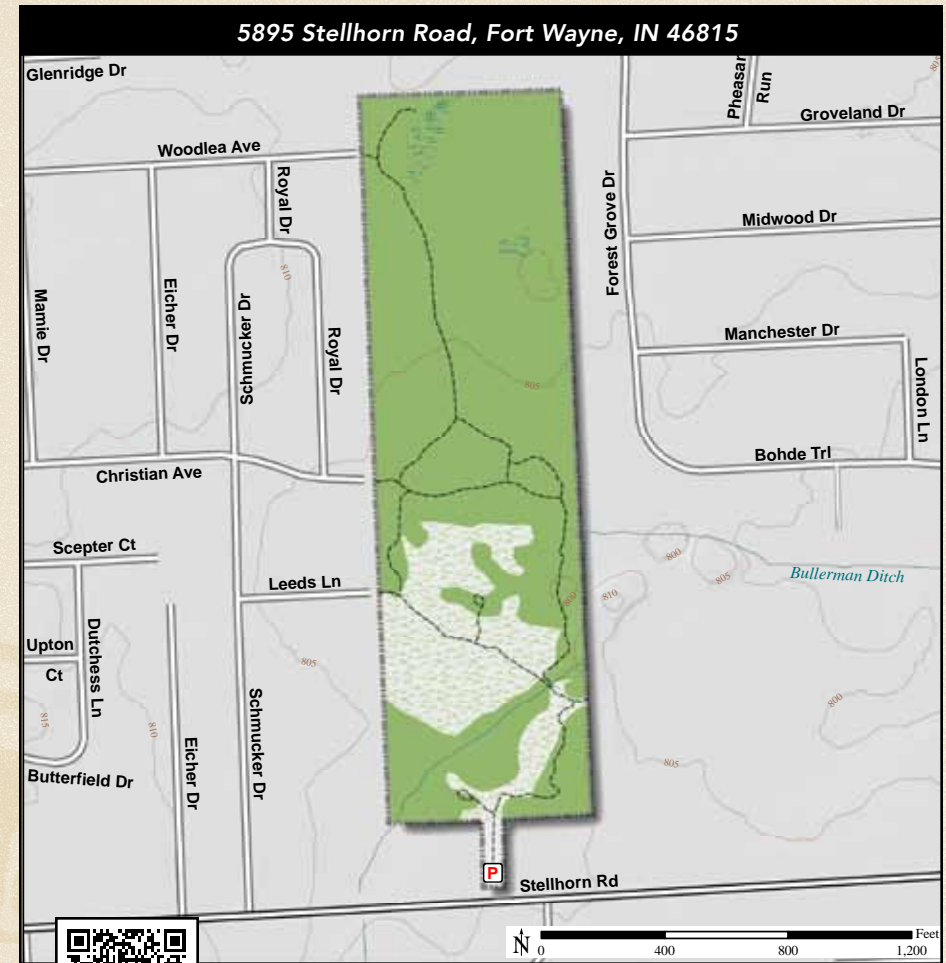




ACREAGE: 36.2 | YEAR ACQUIRED: 1989



0 400 800 1,200 Feet

At this reserve, you will see three stages of forest succession. First, there is an open meadow with clumps of hawthorn and gray dogwood. Then, there are early-stage woods of elm, shagbark hickory and maple, plus a mature forest of sugar maple, beech, oak and shagbark and shellbark hickory. Finally, there is a beech/maple forest. The three habitats and their variety of trees also mean a variety of birds and wildflowers.



New York Ironweed

DIRECTIONS:

From Fort Wayne at the I-69/I-469 interchange, take I-469 east to Maplecrest Rd. (exit 29B) and turn right (south). Travel 2.5 miles to SR 37 (Stellhorn Rd.) and turn right (west). Travel 0.3 miles to the preserve on the right.

