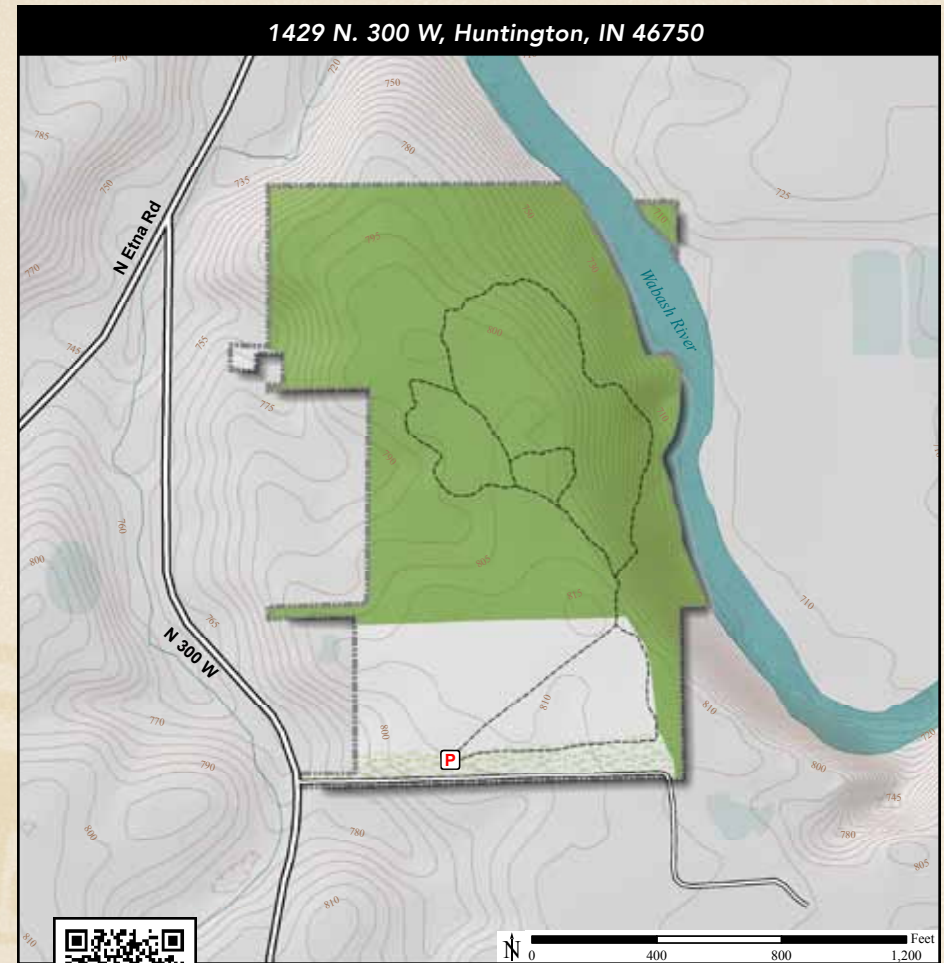




ACREAGE: 39.4 | YEAR ACQUIRED: 1994, 1998



*In Hebrew, Tel means “high” and Hy means “life,” and the names, individually or together, are appropriate. From a bluff high above, visitors have a splendid view of the winding Wabash River. There is life along the river and on the land above – beech and maple trees, sycamores and willows, and a variety of birds and wildflowers, including wood ducks on the river; scarlet tanagers and wood thrushes in the trees; and wild ginger, celandine poppy and rue anemone blooming in season on the ground.*



Celandine Poppy

**DIRECTIONS:**

From Huntington at US 24 and SR 9, take SR 9 south 1.3 miles to 200 N and turn left (east). Travel 1.25 miles to Etna Ave. and turn right (south). Travel 0.25 miles to 300 W and turn left (south). Travel 0.35 miles to the preserve on the left.

