

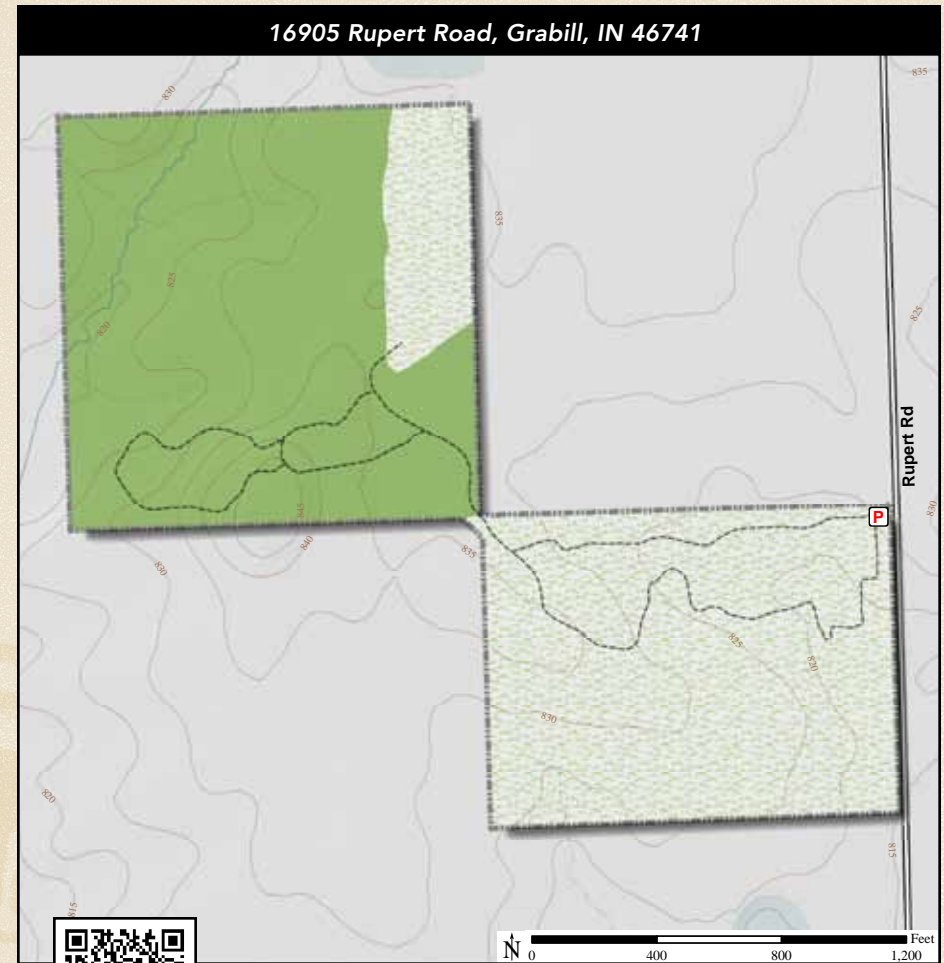


ACREAGE: **70.0** | YEAR ACQUIRED: **1989, 2004**

*Hammer Wald is in various stages of forest succession. There's a field that was cultivated and now has scattered ash, red maple, hawthorn, basswood, elm, black walnut and hop hornbeam – trees of early succession. There's a mature forest of beech, hickory, sugar maple, tulip, cherry and oak trees. The variety of trees and stages of tree growth are matched by the variety of birds and wildflowers.*



Burr Oak Acorn



**DIRECTIONS:**

From Grabill take Grabill Rd. east 2.6 miles to Spencerville Rd. and turn left (north). Travel 2.1 miles to Hursttown Rd. and turn right (east). Travel 1.2 miles to Rupert Rd. and turn left (north). Travel 0.3 miles to the preserve on the left.

