

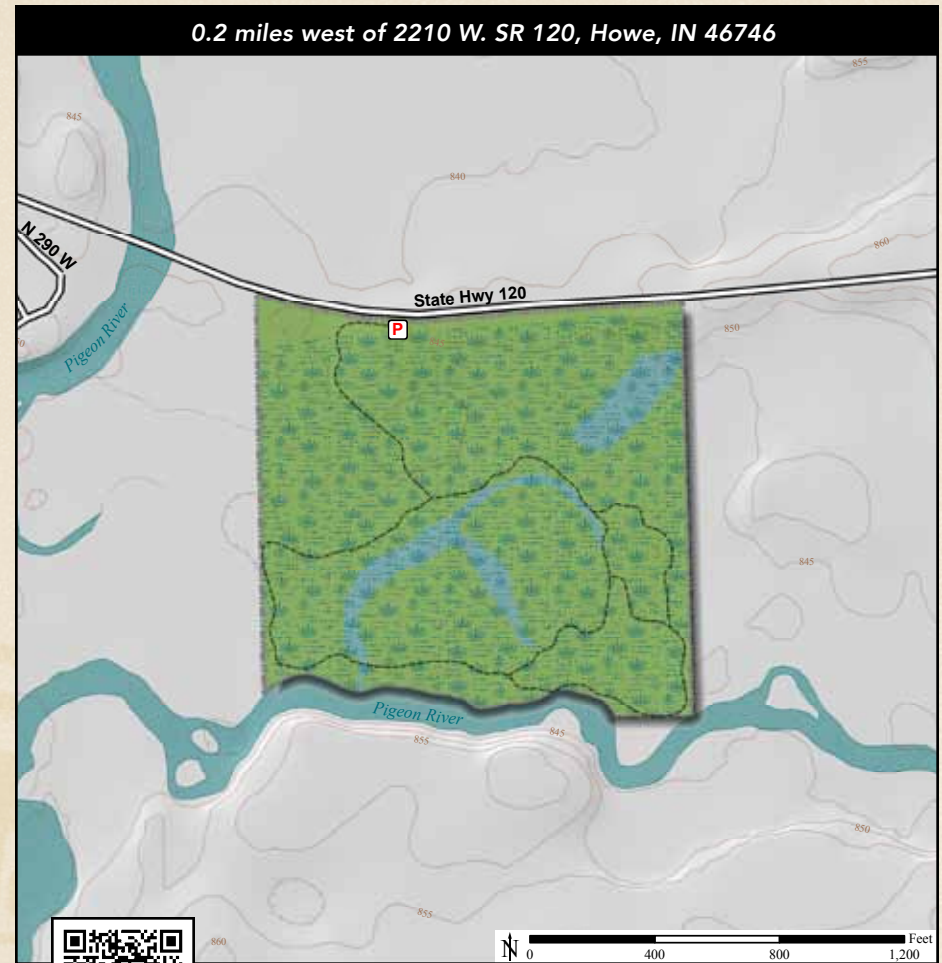


ACREAGE: 41.0 | YEAR ACQUIRED: 2004

Stark borders and protects part of the Pigeon River, one of the few unaltered and undredged rivers in northern Indiana. A walk on the trail near the river reveals that the water is tea-colored from the tannin found in the surrounding wetlands. A prominent feature of the property is an oxbow of the Pigeon River. This oxbow usually contains water. The resulting u-shaped pond is used by wood ducks for feeding, breeding and raising their young. If you don't see these ducks, you may hear their "meep-meep-meep" call.



Pawpaw Fruit



DIRECTIONS:

From Howe take SR 120 west 2.5 miles. The preserve is on the left at the curve in the highway just before crossing the Pigeon River. Parking area is 0.2 miles west of 2210 W. SR 120, Howe, IN 46746.

