

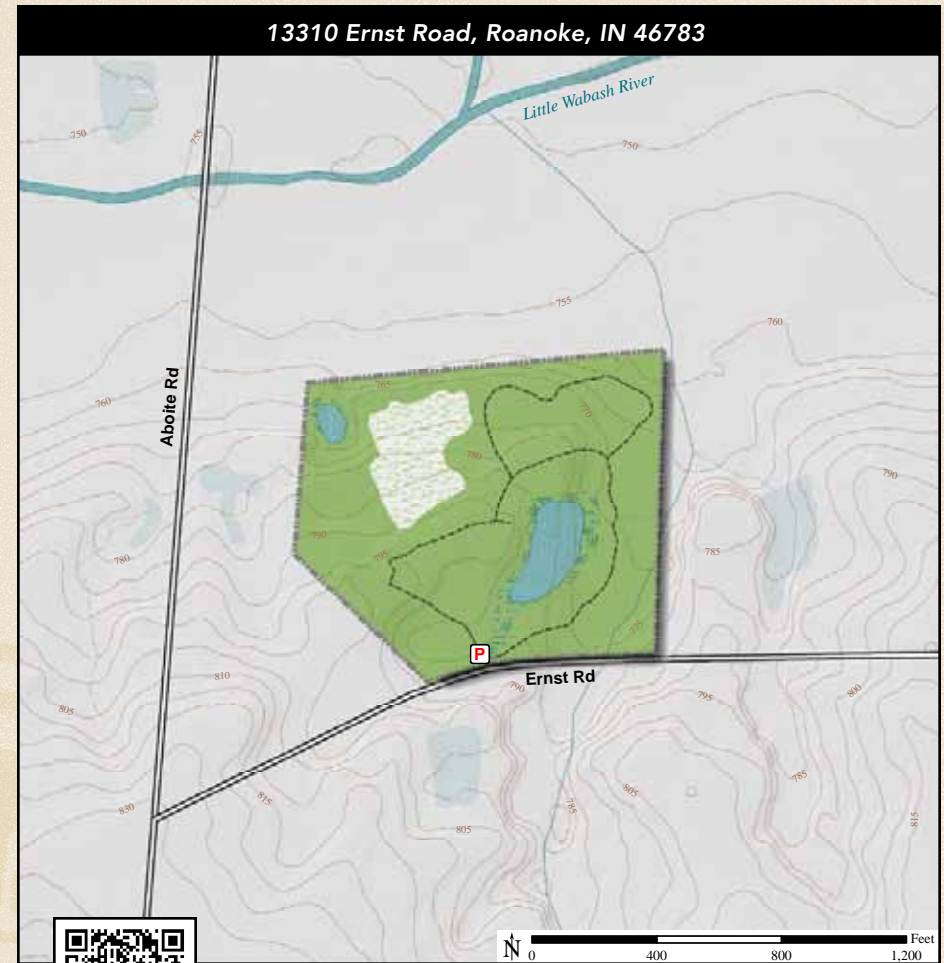


ACREAGE: 24.3 | YEAR ACQUIRED: 2004

*The Little Wabash River Nature Preserve is a place of trees. The land donor constructed a pond and planted cedar, cottonwood and willow trees around it. River birch grow along the trail, as well as scattered northern white oak and red maple on the higher ground. Interspersed are spruce, basswood, hickory, beech, elm, tulip, black cherry, sweetgum, dogwood, sumac and bald cypress—some growing adventitiously from planted specimens. White-tailed deer are commonly seen on the property.*



White-tailed Deer



**DIRECTIONS:**

From Roanoke take 900 N (Lafayette Center Rd.) east, crossing US 24, 2.7 miles to Aboite Rd. and turn left (north). Travel 2.25 miles to Ernst Rd. and turn right (east). Travel 0.25 miles to the preserve on the left.

*Preserve is closed from November 1 through January 31 due to permitted hunting.*

