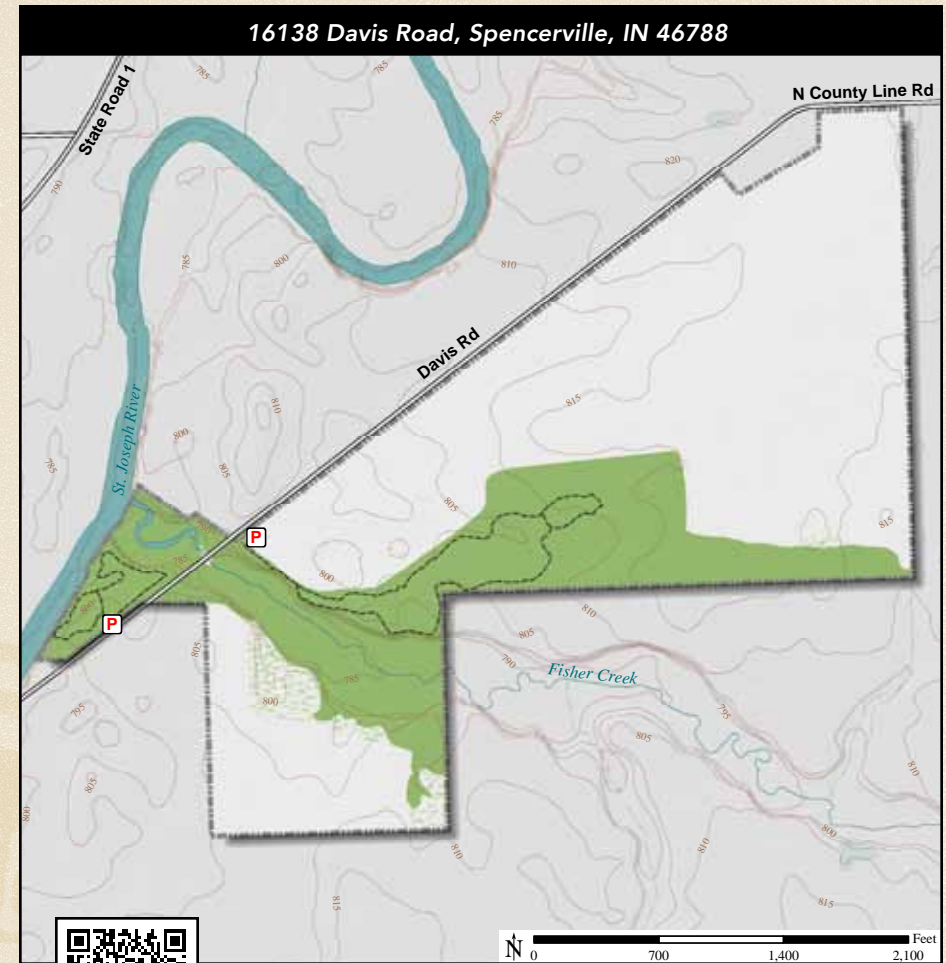




ACREAGE: 192.2 | YEAR ACQUIRED: 1982



This preserve protects a picturesque high south bank of the St. Joseph River, ravines of Davis Fisher Creek and an old-growth maple woods where a maple sugar camp operated for many years. There are still remnants of the sugar camp. The woods have sugar maple, tulip, red and white oak, beech, ash and sycamore. Spring brings a carpet of wildflowers beneath the trees — spring beauty, large-flowered trillium, cut-leaved toothwort and many more.



DIRECTIONS:

From Spencerville take SR 1 south 0.1 miles to Mill St. (CR 68) and turn left (east). Travel 0.5 miles to CR 57 and turn right (south). Travel 1.0 miles to Davis Rd. and turn right (west). Travel 1.3 miles to the preserve on the left.

