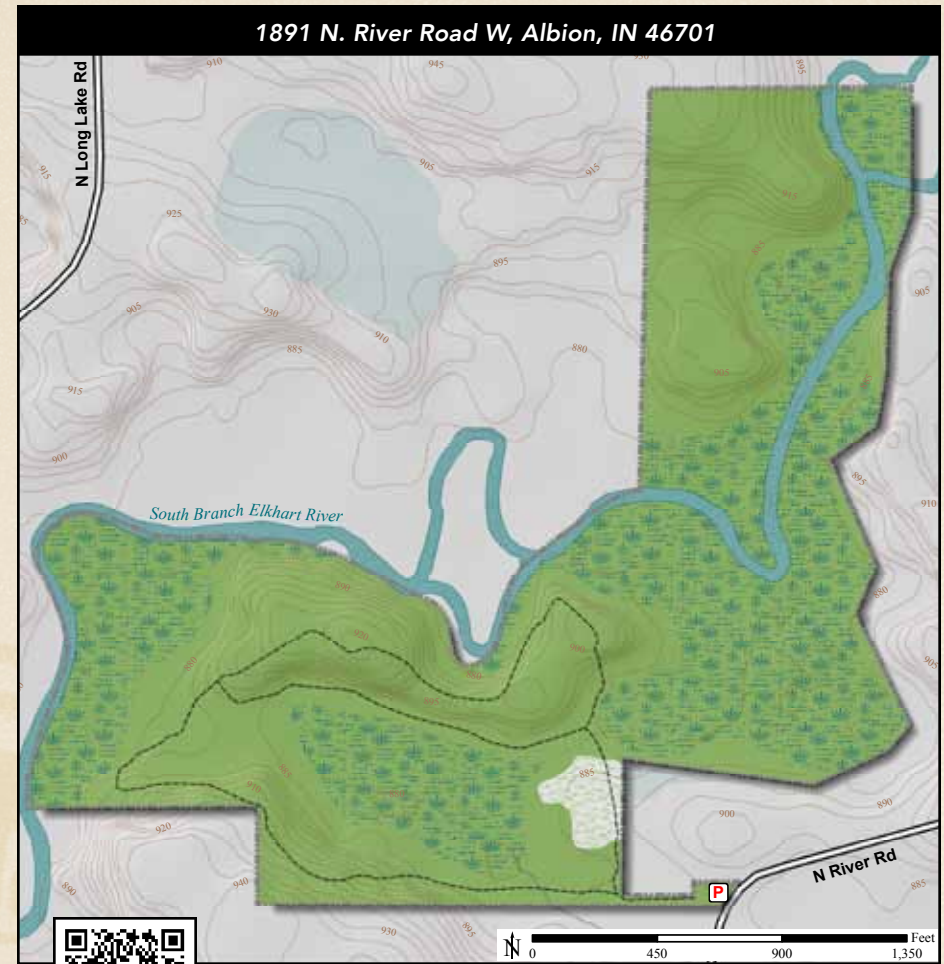


ACREAGE: 116.3 | YEAR ACQUIRED: 1966, 1972, 1975



Enter this preserve on a short boardwalk in a wetland, then go uphill and downhill, traversing a wetland forest, an upland forest, an area of forested floodplain of the Little Elkhart River called *The Spreads* and a brushy section of sedge meadow. The variety of habitats is matched by the variety of trees, birds and wildflowers. There are burr oaks, white oaks, hickories, swamp white oaks, red elms, black willows, green and black ash, cottonwoods and red maples. Plants include royal and cinnamon fern.



Tiger Swallowtail

DIRECTIONS:

From Albion take SR 9 south 0.5 miles to River Rd. (250 N) and turn right (west). Travel 2.0 miles to the preserve on the right.

