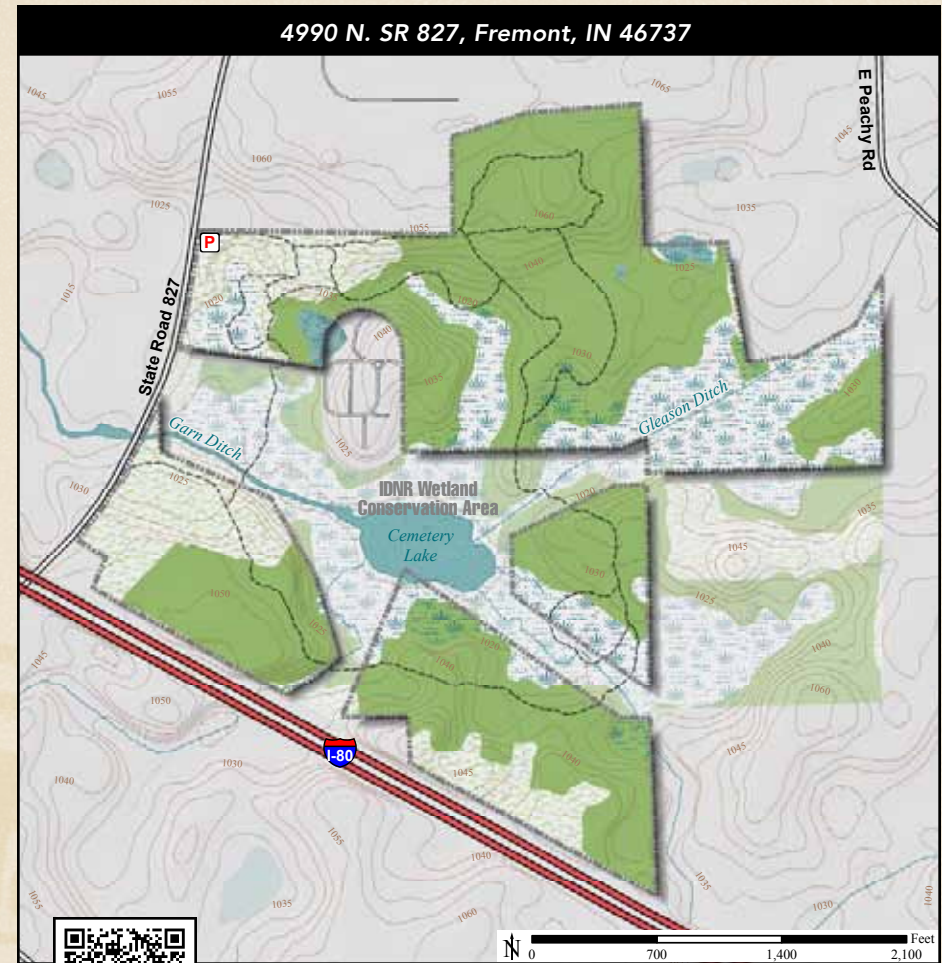




ACREAGE: 169.0 | YEAR ACQUIRED: 1976, 1977, 1982



*Glaciers sculpted this country, creating rolling hills and gravel and sand kames, as well as a kettle-hole lake, Cemetery Lake. The preserve has an upland oak/hickory forest, once-cultivated fields in different stages of succession and wetlands by the lake. This is a natural sanctuary for birds, other wildlife and plants. A platform near the creek is used by visitors looking for ducks and other water birds, great blue herons, muskrats and beavers.*



Wood Duck

**DIRECTIONS:**

From Fremont take SR 827 (Wayne St.) south 1.0 miles to the preserve on the left.

