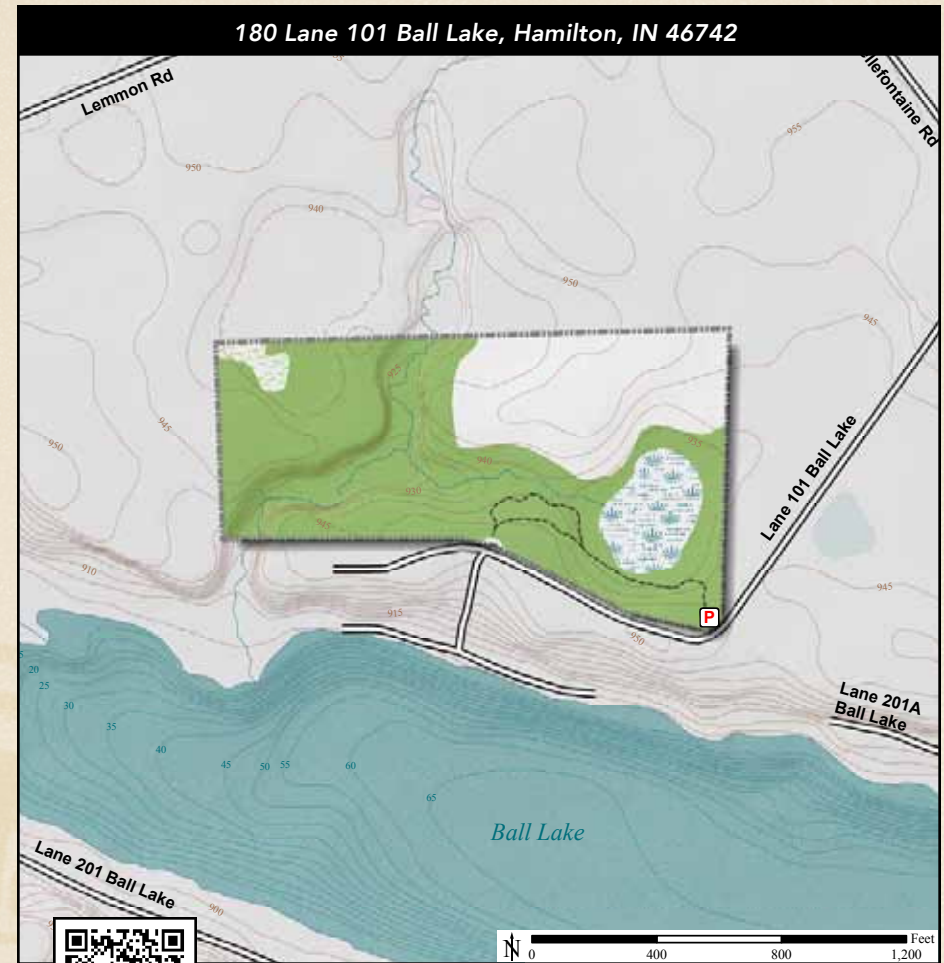




ACREAGE: **26.8** | YEAR ACQUIRED: **1995**



Located on the north side of Ball Lake, this preserve includes a low wetland forest. Partridgeberry and other plants, likely carried here by the glaciers, grow beneath the trees. Marsh marigold and skunk cabbage flourish in the wetlands.



Skunk Cabbage

DIRECTIONS:

From Hamilton at SR 427, take Bellefontaine Rd. northwest 1.7 miles to Lane 101 and turn left (south). Travel 0.25 miles to the preserve on the right.

