

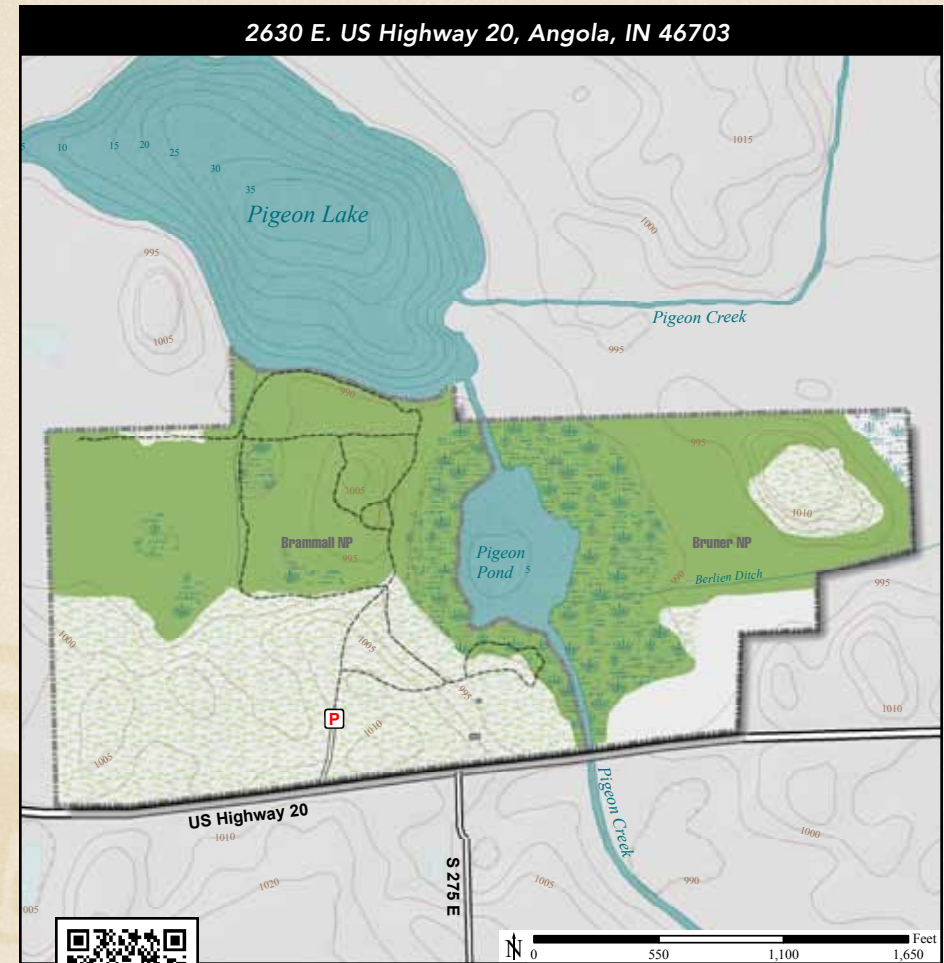


ACREAGE: 124.0 | YEAR ACQUIRED: 2004, 2012

These preserves protect all of Pigeon Pond and portions of Pigeon Lake and Pigeon Creek, reminding us of a time when wild pigeons visited the area. Rolling meadows, wetland forests and a kame-like hill offer opportunities for good viewing of white-tailed deer and wild turkeys. In the summertime, cardinal flower, white snakeroot and tall blue bellflower greet visitors with their respective red, white and blue blossoms.



Bull Frog



DIRECTIONS:

From Angola take US 20 east 3.0 miles to the preserve on the left.

