

# THE ACRES QUARTERLY

Winter 2021 | Vol. 60 – No. 4



**ACRES**  
LANDTRUST

*New Preserves in Steuben County*

*Planned Giving Made Simple*

*Sustainability Snapshot*

*Member Spotlight – Shondell Hobbs*

*Take a Winter Road Trip with ACRES*

*Retiring Trails*



## From the Executive Director

Dear Members,

On ACRES properties, staff, volunteers, partners and contractors accomplish a wide variety of work: invasive species control, reforestation, wetland creation, specialized habitat restoration, trail maintenance, plant inventories, marking and enforcing boundaries, research and more. Historically, we've labeled these efforts "land management."

While management can imply control over something (in our case, control over the properties ACRES owns), that's not how we view our role. Instead of trying to control nature, we try to support and protect it.

Because words matter, we've decided to no longer call these various activities "management." We think "stewardship" better reflects both the intent and accomplishment of these same activities.

Stewardship implies caring for something, observing what it needs, and identifying and mitigating threats. Our change from the word "management" to the word "stewardship" reinforces our respectful approach. Rather than imposing our will on nature, we support nature's will.

Stewardship can also mean caring for something that belongs to someone else. Your support of ACRES stewards the land by enabling our staff, contractors and volunteers to perform stewardship activities on various properties. However, our members, volunteers and staff do not own the land. Instead, we steward the land for the benefit of people, plants, animals and everything contained in and on the land today, and for all those in the future. ACRES owns the land, and we steward the land on ACRES behalf. Our mission statement speaks directly to this:

*ACRES Land Trust owns and protects natural and working lands, inspiring people to value, appreciate and support these places for the benefit of all — today and forever.*

Thank you for stewarding 7,300 acres of special places with us.

 Jason Kissel

jkissel@acreslandtrust.org  
260-637-2273 ext. 102

P.S. On properties such as our protected lands managed for agricultural crops and timber production, ACRES land activities are best described as "managed."

Cover photo by Bridgett Hernandez:  
A snowy path winds through tall grass  
at Fogwell Forest in Allen County.  
As you explore the trails this season,  
see how many different kinds of  
animal tracks you can spot!

ACRES Land Trust owns and protects natural and working lands, inspiring people to value, appreciate and support these places for the benefit of all — today and forever. Today we protect and manage more than 7,300 acres in northeast Indiana and portions of southern Michigan and northwest Ohio. In addition to helping care for and restore our local land, your support also offers trail systems where you and others can explore thriving natural places, from dawn to dusk, at no charge. Thank you!

1802 Chapman Road, PO Box 665 | Huntertown, IN 46748-0665  
260-637-ACRE (2273) | email: acres@acreslandtrust.org

[acreslandtrust.org](http://acreslandtrust.org)



# WELCOME 100 new members!

Theresa & Joseph Adams  
Greg Agler  
Austin Aldrich  
Nancy Alspaugh  
Christopher Ash  
Janet Beckley  
Madison Beckstedt  
Jeff Blossom  
Kimberly Bodkin  
Asonya & Gary Brown  
Natasha Buck  
from Tom Buck  
Agnes B. Budoso  
William Burdine  
Judy Cameron  
Doug Camp  
Chris & Alicia Clark  
Lukas Clifford  
Paige Coslow  
from Richard Coslow  
Reese Cripe  
Robin Cutright  
Evan Davis  
from Joe & Nancy Conrad  
Fatima Diaz  
from Megan Harman  
Judy & Doug Diebel  
Heather Dings  
Tim Dunker  
Julie, Darrin & Karolyn Eastlick  
C. Bess Farrell  
Ashley & Ryan Fauroute  
Bob & Kimberly Freeman  
Randy & Joyce Fry  
Nathan Frye & Hadley Rochyby  
Sally & Jack Fuller  
Norm Gajewski  
Suzanne Galazaka

Sheryl Galliher  
Damian & Jenny Gosheff  
Scott Guerrero Sr.  
John & Trish Gutman  
Andrea Hamman  
Ruth Ann Harris  
Jean Hartman  
Ricky & Arlene Haynie  
Erin Hensley  
from Ted Kalogris  
Lindsey Hernandez  
Darren & Jessica Hunt & Family  
Michael Jamison  
Anna Jauregui  
Skip & Marna Johnson  
Crystal Kalogris  
from Ted Kalogris  
Alice Keesler  
Christy Knecht  
Ethan Krus  
Collin Lambert  
Jim Lindhorst  
Kathryn Lisinichia  
Jarod & Sarah Logsdon  
Rodney Maley  
from Registrar's Office,  
University of Saint Francis  
Jackie & Tony Martinez  
Michael McCoy & Kay Wise  
Cindi McKaig  
Alyssa & Gabriel Medina  
Lexie Michael  
Todd Millar  
Janie Minick  
Kelley & Paul Nebosky  
Mike & Kristi Nelson  
Romona Nelson  
Christian Neuschwanger

Libby & Mike Osborne  
Mary & Andrew Pasquali  
Donna & Harry Quandt  
Kyle Quandt  
from Mikah Simmons & Tice  
Ashurst  
Daniel & Jennifer Raymer  
Nancy & Bill Ricci  
Lee Rimer  
Thelma Rohrer  
Barbara Rush  
Sanctuary Native Landscapes, LLC  
Danielle Sauder  
Alexandra Sauer  
Joel & Ellen Sauer  
Charles Seyfert  
Chad Shaw  
Tammy Silowsky  
Ashley Smith  
Ryan & Lizzy Smith  
from Randy & Carole Smith  
Larry Snyder  
Brad & Laura Spaulding  
David Speakman  
Amber & Ryan Starkel  
Susan Stauffer  
Emma Steele  
Trent Stutzman  
from Patrick Gillan at  
The Antrim Group  
Dawn & Martin Synpiewski  
Karen Troxel  
Jessica UMBER Williams & Keith  
Williams  
Lisa Vanderleest  
Derek Wetli  
Geoffrey Wladecki  
Linda & Paul Wojewuczki

## in memory of

Jason Farren  
from Mary Berghoff, Neil Meyer  
Marc Hudson  
from Helen Frost-Thompson & Chad Thompson  
Claudine I. King  
from Lon Braun  
Al Wleklinski  
from Mary Anna & Fred Feitler, DeKalb  
County Visitors Bureau, MSKTD & Associates,  
Northeastern Center, Inc.  
Robert Shire  
from Alyce Hughes, Connie Long, Jeanne  
& Peter Van Gieson, David Chesko, John Shire,  
Renee Wright, Nancy McKelvey, Pablo Gonzalez,  
Tom & Susan Fisher

Matthew Shumaker  
from Suzanne Dunn  
Marietta Sweetheimer  
from Asenath Wilson, Bank of Wolcott, Brenda  
& Jerry Bale, Dan & Eileen Ransbottom, Diana  
Herriott, Ed & Sharon Burris, Janna Stollery, Keith  
& Jane Hunsberger, LeeAnn Taylor, Margaret  
Gardner, Alan & Vereen Gardner, Northern Gases  
& Supplies Inc., Steven & Susan Vanlaningham,  
Toni & Keith Wilson, Vicki Adams

## in honor of

Philip Davich  
from Ashley & Ryan Fauroute  
Alice Keesler  
from Nancy Conrad



### Growing Existing Protected Natural Areas

*Judge Roger O. De Bruler Preserve*

ACRES Land Trust recently acquired two properties in Steuben County for permanent protection. Together, these properties add 62 acres to the land we protect in the region, bringing ACRES total land protected to 7,331 acres.

These new properties will continue providing habitat for wildlife and native plants while expanding tracts of natural areas already under the protection of conservation partners.

“Whenever possible, ACRES likes to grow existing protected natural areas. Both of these properties are within a conservation area that ACRES hopes to expand — further building on the success of the conservation work already complete within nearby natural areas and by many private owners who retain the natural features of their properties,” said Jason Kissel, ACRES executive director.

#### JUDGE ROGER O. DE BRULER PRESERVE

Judge Roger O. De Bruler Preserve is located just west of Loon Lake in Steuben County. Donated by Karen De Bruler, the preserve’s 40 acres of rolling woodland are named in honor of De Bruler’s late husband. Judge Roger O. De Bruler served as Steuben County Circuit Court Judge before serving 27 years as the Chief Justice of the Indiana Supreme Court.

The 40-acre property was a place for Judge De Bruler to retreat into nature. “It was very near and dear to my husband’s heart,” Karen said. He was intrigued with working the land, having grown up spending weekends at his grandmother’s farm. He planted grapes and walnut trees on the property. After moving away from the area, Karen wanted to make sure this special place was preserved.

Featuring high bluffs overlooking Loon Lake, the preserve protects a portion of the shoreline. The property is adjacent to the 80-acre Anspaugh Wetland Conservation Area and north of 99-acre Loon Lake Nature Preserve, both owned and managed by the Indiana Department of Natural Resources.

According to the DNR’s website, Loon Lake hosts a number of wetland communities which are home to over a dozen rare, threatened or endangered plant species. Among these are purple bladderwort, Robbin’s spikerush, cuckoo flower, pitcher plant, cottongrass and tamarack trees.

#### FELLOWS PRESERVE

Land donors Linda and John Mowry recently protected 22 acres of land. Fellows Preserve, just north of Pokagon State Park, is close to two other ACRES properties in the immediate area: Wing Haven and Beechwood nature preserves.

The land has been in Linda’s family for four generations, starting when her great-grandfather purchased the property in the late 1800s. “I’ve known it all my life,” she said.

She grew up hearing stories about family members who had cared for the farmstead over the years. Her great-grandfather planted fruit orchards and berries, and her grandmother had a reputation as a fast berry picker. Her mother shared stories about milking the cows before heading to school.

As a longtime ACRES member, protecting her family’s land through the organization had always been a consideration. Her mother, Eva Bradfield Claphan Yentes, was an early ACRES member, joining the group in 1960.

The family decided to name the property “Fellows Preserve” in honor of their grandmother, Florence Fellows Bradfield, who had worked hard to keep the family farm during the Great Depression.



*Fellows Preserve*

The preserve features a restored prairie, a wetland and a portion of shoreline along Green Lake.

“Both De Bruler and Fellows were donated — a very generous act that also preserves forever these places that they love and cared for. They have now contributed to decades’ worth of conservation activities performed in the area, and can be assured that ACRES will provide centuries more,” Kissel said.

*De Bruler and Fellows preserves are closed to the public. ACRES needs your help to raise \$32,600 to cover costs associated with these newly protected properties. To make a one-time donation, visit [acreslandtrust.org/donate](https://acreslandtrust.org/donate). If your gift is for a specific project, please be sure to note which project you would like to support.*

*Photos by Jarriid Spicer*





## Planned Giving Made Simple

*“We trust and believe in the ACRES forever promise.”*

Jeri Kornegay and Lyn Winchell learned about ACRES decades ago when Kornegay’s former Manchester University colleague, Bob Frantz, gave her walnuts from his trees. Frantz spoke fondly of ACRES and his intentions to protect his beloved land, now Wildwood, through the land trust, inspiring Kornegay and Winchell to join as members in February 2008.

Their reason for getting and staying involved is a sentiment often expressed by ACRES members. “We are reminded constantly of the frailty of healthy, native space,” Kornegay said. “We’re hikers and kayakers and walkers. We favor solace for those activities, when we can spot a blue heron nest or startle a doe or marvel at the plethora of pawpaws in the very first ACRES preserve, in Noble County.”

Since joining, Kornegay and Winchell have supported ACRES in a variety of ways. In addition to exploring preserves on their own, they’ve joined in on multiple outings, events, book discussions and more. “At every event, we make new friends and discover old friends who we did not realize share our ACRES passion,” Kornegay said. They helped plant trees at Blue Cast Springs and have attended dedications of new preserves. ACRES wish list is part of their regular big-box store shopping, and they continue to volunteer in many ways, including Kornegay serving on ACRES advancement committee and Winchell researching ACRES history.

Their commitment to protecting local land now extends beyond their own lifetimes. ACRES is part of their estate plans. “It was a natural progression for us to embark on planned giving to ACRES,” Kornegay said.

“We have no children. Assigning one of our pensions to ACRES upon death was simple; it took but a few minutes. We then filled out an ACRES form so they know where the funds await. Easy peasy.”

## WAYS TO GIVE

Planned giving, or “legacy giving”, is the process of making a notable donation during your lifetime or at death that is part of your financial and/or estate plan. This type of gift requires a bit more effort than writing a check or swiping your debit card but can still be a fairly simple process.

## COMMON TYPES OF PLANNED GIFTS INCLUDE:

- **Bequest:** donating assets such as cash, real estate or proceeds from the sale of assets through a will
- **Life Insurance:** you can name ACRES as the beneficiary of a permanent policy
- **Retirement assets like an IRA:** a Qualified Charitable Distribution (QCD) can help satisfy your required minimum distribution for the year if certain rules are met
- **Stocks and Securities:** transfer ownership of shares of stock either during your lifetime or through your will

## UNIQUE GIFTS

Some donors get creative with planned giving to ACRES. A few donations from more recent years include:

- A donor with no surviving family members donated his small city lot and house to ACRES with the intention that ACRES sells them, using the proceeds to protect and care for other land.
- A longtime ACRES member donated valuable artwork, directing the group to use it as decor in the ACRES office, auction it off at a benefit event or sell it to a private buyer, using the proceeds to further its mission.
- Two brothers who jointly owned Bitcoin donated it to ACRES. At the time of the donation, it was valued at around \$15,000. When sold, the proceeds exceeded \$57,000.

## ACORN SOCIETY: What will your legacy be?

By making your plans known to ACRES, you will become a named or anonymous member of the Acorn Society. Unless you specify otherwise, we will not publish your name or give your information to anyone without asking your permission.

If you want to include ACRES in your plans, please contact us so we can help guide you in making a gift that suits your own needs while having maximum impact on our mission of protecting local land. Sharing your plans also ensures we properly recognize your donation and manage your gift in accordance with your wishes.

*The above information is not intended as legal or tax advice. Please contact your professional advisor prior to making any planned gift. To learn more about planned giving, contact ACRES Advancement Director Heather Barth at 260-637-2273 ext. 105 or [hbarth@acreslandtrust.org](mailto:hbarth@acreslandtrust.org).*

## SUSTAINABILITY SNAPSHOT: A look into ACRES practices



ACRES welcomed intern Joelle Buller for the summer. A senior sustainability student at Taylor University, Buller shadowed staff, learned about nonprofit land trust work and took on several projects.

One project ACRES and Buller were excited to explore was an evaluation of current practices to provide direction and support for future sustainable development. Here are some of the highlights from Buller's report:

### Impact of natural areas

The natural areas ACRES protects are places where large amounts of carbon from the atmosphere can be stored through carbon sequestration. Over 70% of ACRES land cover is forest or wetland, ensuring that carbon will continue to be stored there in the future.

Using the Nature Conservancy's tools, Buller estimated that ACRES land stores 322,198.7 metric tons of carbon. She also found that ACRES forests could potentially sequester as much as 1,431.7 metric tons of carbon per year.

**In one year, ACRES lands sequester the carbon equivalent to that emitted by**



**1,142**

Driving 1,142 passenger vehicles for a year



**632**

Annual energy use from 632 homes



**590,702**

Gallons of gasoline

### Working lands support communities

Like natural spaces, working lands such as agriculture and timber stands can also be at risk of development. According to Buller's report, the 500 acres of working lands ACRES protects can support the local economy and food system while generating revenue for managing natural areas.

As ACRES creates partnerships and easements for working lands, the environmental and social sustainability of local communities can grow. Working land is protected from development and can be leased to local farmers below market value. These farmers are then required to follow best management practices to ensure healthier land, such as no-till farming and cover crops.

*Thank you, Joelle Buller, for your thorough and encouraging sustainability evaluation.*

## Looking for special holiday gifts for land lovers?

**Buy ACRES gear at the office or online at [acreslandtrust.org/shop](https://www.acreslandtrust.org/shop)**

Order well in advance for timely delivery.



### NEW Acorn Sweatshirt

Enjoy this cozy crew neck sweatshirt with an acorn design by local artist Adam Johnson. \$30 in the office; \$38 online with shipping and handling.



### NEW Acorn Hoodie

Our new zip-up hoodie features Johnson's acorn design on the back of the shirt. \$35 in the office; \$43 online with shipping and handling.



### Artsy Logo Tee

Local artist Ian Ruisard reimagined the ACRES logo for this t-shirt design which features native plants and animals. \$20 in the office; \$25 online with shipping and handling.



### Long-sleeve Tee

The long-sleeve tee features Ruisard's artsy logo design on the back of the shirt. \$25 in the office; \$30 online with shipping and handling.



### ACRES Beanie

Keep your noggin warm in the woods with this super soft knit hat. \$15 in the office; \$18 online with shipping and handling.



### ACRES Membership

Do you have friends or family who will appreciate discovering and supporting ACRES? Gift them a membership with a donation of \$20 or more at [acreslandtrust.org/donate](https://www.acreslandtrust.org/donate)!

ACRES office is open Monday–Friday from 9 am–4 pm. Due to the nature of our work, we may be in the field. Please call ahead to be sure we're here to help you.

*The health and safety of our ACRES family is paramount, as is the public health of our communities. Please wear a mask and social distance while in the office.*

## WILL YOU MAKE AN END-OF-YEAR DONATION?

ACRES is raising money to protect more local land, and we need your support. If you're able, please consider a donation beyond your membership. Every dollar you donate will help cover costs associated with newly protected land. Make your gift online at [acreslandtrust.org/year-end-giving](https://www.acreslandtrust.org/year-end-giving). Thank you!

Photo spread on pages 10–11 by Holly Quandt: Snow covers the banks of the Wabash River at Acres Along the Wabash Nature Preserve in Wells County. The 86-acre preserve protects riverbank, bluffs and forest. Bundle up and enjoy the peaceful quiet of a winter hike this season!







## RIVER HEALTH AND DAM REMOVAL

**SATURDAY, DECEMBER 11, 10 am**

ALLEN COUNTY | ACRES Land Trust Office  
1802 Chapman Road, Hometown, IN 46748

ACRES recently partnered with EcoSystems Connections Institute to remove a low-head dam in the Cedar Creek Corridor. Learn why you should give a "dam" about the project during this informative presentation. Space is limited. RSVP to [outreach@acreslandtrust.org](mailto:outreach@acreslandtrust.org) or call 260-637-2273 by December 9.

*Presented by EcoSystems Connections Institute Senior Ecologist Jerry Sweeten*

## FIRST HIKES

**SATURDAY, JANUARY 1** (Multiple times and locations)  
Ring in the New Year with invigoration! We'll explore the trails across the region, welcoming 2022 with movement and camaraderie.

**10 am ALLEN COUNTY** | Blue Cast Springs  
21412 Bluecast Road, Woodburn, IN 46797

**2 pm STEUBEN COUNTY** | Ropchan Memorial  
6830 N. 750 W., Orland, IN 46776

**2 pm KOSCIUSKO COUNTY** | Wildwood  
409 E. SR 14, Silver Lake, IN 46982



## NEW MEMBER OPEN HOUSE

**SATURDAY, JANUARY 15, 1-2:30 pm**

ALLEN COUNTY | ACRES Land Trust Office  
1802 Chapman Road, Hometown, IN 46748

Are you new to ACRES? Welcome! Meet other new members and longtime volunteers while learning how your membership protects land. Hear ACRES history, get updates on new projects and get answers to your questions: How do we acquire new land? How will we protect it forever? Refreshments provided.



## WINTER CREEK STOMP FOR MEMBERS

**SATURDAY, JANUARY 29, 2 pm**

WABASH COUNTY | Hathaway Preserve at Ross Run  
1866 E. Baumbauer Road, Wabash, IN 46992

Ross Run in winter is spectacular! 20' icicles, frozen waterfalls and fossils. Come see what you've been missing! Depending on weather, we'll be walking either through frigid water or on ice. Choose appropriate footwear and consider bringing dry shoes and socks for after. Space is limited. RSVP to [outreach@acreslandtrust.org](mailto:outreach@acreslandtrust.org) or call 260-637-2273 by January 27.

*Presented by the Kissel Family*



## WORLD WETLANDS DAY

**WEDNESDAY, FEBRUARY 2** (Multiple times and locations)

Celebrate Wetlands Day with a hike on a forever-protected preserve. Learn about how wetlands keep our communities healthy, and how you can join ACRES to protect these unique habitats.

**2 pm ALLEN COUNTY** | Vandolah  
16151 Toth Road, Leo, IN 46765

**4 pm NOBLE COUNTY** | Lloyd W. Bender Memorial Forest  
1891 N. River Road W., Albion, IN 46701



## ART WORKSHOP FOR MEMBERS

**SUNDAY, FEBRUARY 20, 2 pm**

ALLEN COUNTY | ACRES Land Trust Office  
1802 Chapman Road, Hometown, IN 46748

Get creative with local artist Julie Wall, owner of The HEDGE art and custom print shop. Paint by numbers on a wooden panel full of her detailed illustrations of local flora and fauna. Learn different techniques and take home your work after the event. All supplies included. Space is limited. RSVP to [outreach@acreslandtrust.org](mailto:outreach@acreslandtrust.org) or call 260-637-2273 by February 16.

## SWIFT HIKE & BALD EAGLE WATCH

**SATURDAY, FEBRUARY 26, 2 pm**

WABASH & MIAMI COUNTY | *Addresses available with RSVP*

Caravan along with us to several ACRES preserves. Take a quick hike at each preserve to watch for bald eagles soaring along the ravines and waterways.

Space is limited. RSVP to [outreach@acreslandtrust.org](mailto:outreach@acreslandtrust.org) or call 260-637-2273 by February 24.



## SAVE THE DATE:

### ASHERWOOD MAPLE SYRUP AND PANCAKE DAY FOR MEMBERS

**SATURDAY, MARCH 12, 9 am-NOON**

WABASH COUNTY | Asherwood Environmental Center  
7496 W SR 124, Wabash, IN 46992

Enjoy breakfast and a guided tour of ACRES maple syrup operation. \$5/person, children under 5 free. Volunteers needed. To help, contact Jason Kissel at [jkissel@acreslandtrust.org](mailto:jkissel@acreslandtrust.org) or 260-637-2273, ext. 102.

*Social distancing (keeping at least 6 feet of distance between individuals at all times) will be implemented at all events. Please stay home if you feel ill or have been recently exposed to someone with COVID-19. Masks are required at all indoor events.*

*To check the status of an event please call 260-637-2273, email [outreach@acreslandtrust.org](mailto:outreach@acreslandtrust.org) or visit [acreslandtrust.org/events](https://www.acreslandtrust.org/events)*





## MEMBER SPOTLIGHT

### Shondell Hobbs

## Restoring Reciprocity by Chris Fairfield

Every day the Earth presents and sustains abundant ecological gifts. Author Dr. Robin Wall Kimmerer writes about indigenous knowledge outside of traditional scientific methodologies, reminding us that today, we call these gifts “natural resources.”

Natural resources are beneath, behind, in and around whatever we build, use, discard and vacate. ACRES Land Trust practices what Kimmerer calls “restorative reciprocity.” This huge task has become increasingly important as Indiana’s human populations grow and progress.

Human migration to the region can continue to unwittingly diminish and even cut off wildlife habitat and natural migration patterns. ACRES makes it a mission to reconnect and restore nature to its primal form for the benefit of all. Two of these restored properties are the Little Cedar Creek Wildlife Sanctuary and Detering Nature Preserve.

The 27-acre Little Cedar Creek Wildlife Sanctuary in Allen County, acquired in 1997, sits at the south end of a house-lined lane. The sanctuary includes the former Cecil and Bertha Myers homestead, a parcel transferred by Dr. Jerry and the late Mary Ellen (Molly) Mackel, and a portion of the abandoned New York Central Railway line. Under ACRES care, the land helps support the increasingly important Cedar Creek Corridor. It also supports wildlife migration between the former Dr. Frederick and Alfreda Mackel homestead (once the site of a water-powered stoner mill) and James M. & Patricia D. Barrett Oak Hill Nature Preserve.

The 54-acre Detering Nature Preserve sits on the south shore of Round Lake in the middle of a busy Kendallville commercial district in Noble County. Esther Detering, granddaughter of August Detering who bought the property in 1869, bequeathed the property to ACRES in 1986. She called the land “a sacred place.” It had fruitfully supported the family home and a prominent farming business. When the house was no longer in use, the lane became a thoroughfare for local fishermen and lakers. Now under ACRES forever care, the land has been returned to the more sustainable ecology of a natural lake shore and woods.

In her book *Braiding Sweetgrass*, Kimmerer writes: “It’s not the land which is broken, but our relationship to land.” ACRES Land Trust is busy attempting to restore this synergy, one preserve at a time.

*The Little Cedar Creek Wildlife Sanctuary currently does not support public trails, and the public trail on Detering Nature Preserve will be retired on December 31, 2021.*

### What made you want to support ACRES?

I always thought there were no good places to hike here in northern Indiana, but a few years ago, I found out we had some waterfalls in the area. I visited my first ACRES property, Kokiwanee, and then a few weeks later went to Hathaway Preserve at Ross Run. I really enjoyed both of these preserves.

For Christmas that year, I bought my family an ACRES membership. I decided it only made sense to support this organization that is protecting nature in our area and allowing us access to these preserves for free. It was such a small price to pay for the number of times we’ve visited ACRES properties.

### Do you have any favorite preserves?

Some favorites are: Hathaway Preserve at Ross Run, Ropchan Wildlife Refuge, Acres Along the Wabash, Asherwood, Pehkokia Woods, McNabb-Walter Nature Preserve, Wildwood and Lloyd Bender Memorial Forest.

### When did you become interested in photography?

My family travels a lot and when we started hiking, I became more interested in nature photography. It’s so awesome to see wildlife in their natural habitat and capturing the shot is so rewarding.

### Tell us about some of the photos you have captured.

We attended a bald eagle watch with ACRES in February last year and I got some amazing pictures of bald eagles that day.

While hiking, we’re always on the lookout for reptiles and amphibians of all kinds. I got some really good shots of a Blanding’s turtle at an ACRES preserve, which was an awesome find because they are endangered in Indiana.

The biggest snake I’ve ever seen in the wild was at an ACRES preserve. It was a black rat snake stretched out on a rocky bluff. I was able to take several pictures and went on my way without disturbing it.

*Thank you, Shondell Hobbs, for supporting ACRES and sharing your beautiful images with us on Instagram! To see nature photography from her family’s travels, follow her at @theresnothingmorebeautiful.*





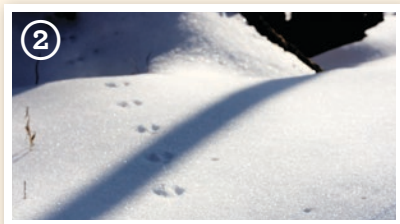
# TAKE A WINTER ROAD TRIP WITH ACRES

Thanks to member and volunteer support, ACRES offers many places to explore throughout our region. Each preserve is unique, featuring diverse landscapes. If you're looking for some new-to-you trails, why not make a day of it?

In this winter edition of our road trip series, we're sending you to Steuben County to enjoy some cold weather fun.

## Start at Robb Hidden Canyon

Located 10 miles south of Angola, Robb Hidden Canyon's trails are a great place for a winter hike or cross-country skiing. With the contour of its steep ravine unobstructed by foliage, the preserve's natural beauty is laid bare this time of year. The 87-acre property features 1.7 miles of trails. A meadow above the ravine provides a panoramic view of Ball Lake.



## Next Stop: Marion's Woods

Enjoy a walk among towering trees at Marion's Woods in the city of Angola. The 19-acre preserve protects mature woods dominated by oak, hickory and cherry. As you walk the half-mile trail, keep an eye out for critter tracks on the snow-covered path.

## Third Stop: Wing Haven

Travel four miles north, and you will arrive at Wing Haven. This 254-acre preserve surrounds glacially carved kettle-hole lakes. The 1.9-mile trail system climbs a deep ravine and winds through woodland covered in oak, hickory and red maple trees.

This land, now protected by ACRES, was owned by Helen and Ben Swenson, who managed nearby Potawatomi Inn at Pokagon State Park from 1937 to 1948. Helen Swenson was an artist who found inspiration in this natural setting. Near the trailhead, you can see the log cabin she used as an art studio.



## Nearby Points of Interest

Here are a couple fun stops to make while you're in the area:

### Toboggan Run at Pokagon State Park

450 Ln 100 Lake James  
Angola, IN 46703

Open November - February, the refrigerated toboggan run is a 20-second thrill ride with a total vertical drop of 90 feet over a quarter mile. Check park website for hours and COVID precautions.

### Cahoote's Coffee Cafe

218 W. Maumee St.  
Angola, IN 46703

Hours: 9 am - 7 pm Tuesday - Friday, 10 am - 4 pm Saturday, closed Sunday - Monday

Warm up with a hot drink at this cozy local spot in downtown Angola. The café offers a billiards table, board games and a cabinet of art supplies free for use.

## Accessible Deck and Trail Coming Soon!

We've started work on a new accessible trail and deck at the Tom and Jane Dustin Nature Preserve in Huntertown. If you've visited the preserve recently, you might have noticed that a portion of the existing trail is blocked off. Here, our stewardship team is clearing the way for a .25-mile loop trail and an observation deck that will offer a view of Cedar Creek from atop an 80-foot ravine.

ACRES offers over 50 miles of trails throughout the region to inspire people to protect natural areas. We're excited to offer a new accessible trail and deck to share that experience with everyone. We hope to open the new trail and deck to visitors in spring 2022.

We'd like to thank the Cairn Foundation and Geoff & Josie Fox Family Foundation for their support.

## YOU CAN HELP!

The accessible trail and deck is the final phase of our Capital Campaign to create a more welcoming and efficient ACRES headquarters. Thanks to our supporters, we've raised 90% of our goal for the campaign with \$60,549 left to raise!

Will you help ACRES make nature more accessible? Support the project at [acreslandtrust.org/grow](https://acreslandtrust.org/grow).







## Welcome, Ben Taylor!

Welcome to Ben Taylor, the newest member of the ACRES team! Taylor recently joined the staff as contract and project manager.

This new position oversees a wide range of projects to ensure the business of protecting land gets done.

"Creation of this new position allows the multiple staff members previously assigned to these projects greater capacity to work within their fields of expertise (fund development, negotiating land acquisitions and natural resource management)," said Jason Kissel, ACRES executive director. "It also creates greater efficiency and consistency by having one employee specializing in project management rather than multiple employees each occasionally leading projects."

This work includes contract management, due diligence for land acquisitions, stewardship projects and visitor amenities installations. Taylor will work closely with community partners to build relationships across our 27-county service area.

Growing up in Winamac, Indiana, Taylor enjoyed fishing on the Tippecanoe River and spending time at nearby Tippecanoe River State Park. After learning how environmental pressures can affect these places, he felt called to devote his career to protecting natural areas.

"The best thing we can do for the environment is protect land. Protecting land along rivers can protect from pollution and erosion. Protecting forest can remove carbon dioxide from the atmosphere and provide habitat," he said.

## ACRES 2021 WINTER PHOTO CONTEST

*Photos due Monday, January 17 @ 5pm*



'Tis the season to snap a photo! As you explore the frosty trails, take your camera or phone to capture a critter, a selfie or a stunning scene! Members of ACRES board and staff will select five winners who will receive a newly-designed ACRES sweatshirt and a one-year membership. Contest Categories:

**WILDLIFE:** Take a quick pic of a critter you've spotted along the trails

**PEOPLE ON PRESERVES:** Photograph a preserve outing with your friends or family

**SELFIE:** Bundle up and snap a trail selfie by yourself or with your group

**LANDSCAPE:** Share the natural wonders of an ACRES preserve with a winter scene

**MACRO PHOTO:** Capture a nature close-up

Photo submissions must be captured this winter (2021–2022) at an ACRES preserve, following all preserve rules. Interested in participating? Find out how to enter and read contest guidelines at [acreslandtrust.org/photocontest](https://acreslandtrust.org/photocontest).

*photo by Michael Kefer*

# SPECIAL thanks

ACRES Board of Directors & Committee Members

ACRES staff outing hosts:

Gene Stratton-Porter State Historic Site,  
Black Pine Animal Sanctuary, Merry Lea  
Environmental Learning Center

Archive project volunteers:

Chris Fairfield, Mary Anna Feitler, Bob Palmer,  
Carol Spallone

Benefit Concert volunteers

Dana Bromelmeier  
Power washing the office

Dave Brumm

Assisted with office maintenance and  
furniture construction

Joelle Buller

Providing ACRES with a sustainability report

Community Coalition for Change

Workday at Wing Haven

Karen De Bruler

Interview for Quarterly article

Chris Fairfield

Volunteer hike leader for Walks and Wine,  
Quarterly article contribution

Quarterly assembly & distribution volunteers:

Dave Brumm, Mary Campbell, Laura Colpitts,  
Nancy and Joe Conrad, Norm Cox, Mary Daly,  
Barb and Terri Gorney, Jim Haddock, Mark  
Maffey, Kim McDonald, Shane Perfect, Judy  
Schroff, Ginny Simerman, April Steury

Fall Fest booth volunteers:

Lisa Seiler, Wayne & Ann Shive

Fresh Baked

Custom sugar cookies for volunteer gifts

Tedra Hemingway

Donating coffee

Shondell Hobbs

Interview for Quarterly article

Jeri Kornegay & Lyn Winchell

Sharing their story about planned giving

Mark Maffey

Volunteering at Feather Fest booth; donating  
ream of copy paper

Rick Mink

Donating an HP color laser printer

Linda Mowry

Interview for Quarterly article

Native Garden Workday volunteers:

Stephanie Bailey, Kris Connerly, Nancy Conrad,  
Charles Enea, Chris Fairfield, Diane Jones,  
Cheryl Piropato

Office support volunteers:

Laura Colpitts, Louise Pomeroy

Popp Open House volunteers:

Larry Biggerstaff; Tom Gardner; Tiffany  
Kowailw; Keith, Louise & Maggie Pomeroy

Seed Collection Workday volunteers

Jarrid Spicer

Photographing newly acquired properties

Soltre

Performing at the benefit concert

Jamie Stark

Donating straw bales for benefit concert

Volunteer preserve stewards, caretakers and  
trail monitors

Julie Wall

Leading art workshop for members

## wish list

To order from ACRES Amazon Wish List, visit [acreslandtrust.org/wishlist](https://acreslandtrust.org/wishlist)

ACRES memberships and your stories

Mike's Car Wash gift cards

Paper towels

Batteries (AA, AAA, C, D & 9 volt)

Bottled water

Coffee

**DIRECTORS:** Dawn Ritchie, President; Joe Conrad, Vice President; Wayne Shive, Vice President; Mark Maffey, Secretary; John Caffray; Barb Clark; Dan Ernst; Bob Hake; Steve Hammer; Veronica Mertz; Rob Parker; Jerry Sweeten; Terry Thomsbury; Chris Fairfield, Recording Secretary

**STAFF:** Jason Kissel, Executive Director; Jenna Bair, Stewardship Assistant; Heather Barth, Advancement Director; Bridgett Hernandez, Communications Manager; Evan Hill, Stewardship Director; Gavin King, Stewardship Assistant; Natasha Manor, Office Manager; Reena Ramos, Outreach Manager; Ben Taylor, Contract and Project Manager

**ACRES Quarterly:** Carol Roberts, Editor | Published by ACRES, Inc., at 1802 Chapman Road, PO Box 665, Huntertown, Indiana, for the interest of its members, friends and others similarly dedicated to the preservation of natural areas. ACRES, Inc., is a nonprofit, charitable corporation, incorporated under the laws of Indiana. Contributions are deductible for tax purposes.

**MEMBERSHIP:** Life Member, \$1,000; Corporate Member, \$500; Annual Member, \$20. Dues payable annually.



James P. Covell Nature Preserve

**ACRES Land Trust**  
1802 Chapman Road  
PO Box 665  
Huntertown, IN 46748

photo by Carol Spallone

*Beyond the bean stubble  
Of the open field  
The forest holds a treasure  
Known to the Great Blue Heron  
Gliding low over the water  
Known to the Belted Kingfisher  
Swooping down from its perch with a joyful call  
Known to the mosses and ferns  
Bright green in winter  
Known to the old growth oaks  
Standing with silent majesty  
Come close to the pebbled shoal  
To know the flow...  
The eternal flow*

— STEVE ETHERIDGE, ACRES MEMBER



**ACRES**  
LANDTRUST

[acreslandtrust.org](http://acreslandtrust.org)